



KUDU NEWS

ISSUE 04



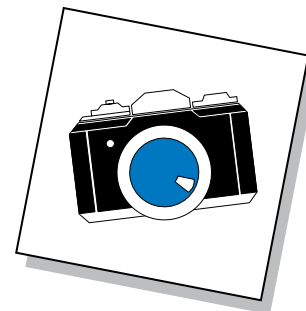
CHECK OUT OUR NEW WEBSITE

We are pleased to announce the launch of our new website!

Our newly designed website can be found at www.kudupump.com and features PCP resources and animations, information on KUDU's full product line, updates from our research & development team, well data sheets and much more.

*Thank you
for your
business.*

*All the best
in 2010!*



KUDU PHOTO CONTEST

- SEND US YOUR PHOTOS!

Do you have a photo of your KUDU equipment? If so, we'd love to see it!

Send your best photos by February 26th (points for creativity!) to marketing@kudupump.com and the winner will receive an iPod Touch.

*KUDU reserves the right to use any photographs or information submitted for this contest in future promotional materials or publications.

WHAT'S NEW AT KUDU

KUDU holds over 20 patents using Progressing Cavity Pumps in the artificial lift field. This strong commitment for advancing Progressing Cavity Pump technology exemplifies KUDU's dedication to quality and performance.

KUDU continually reinvents the status quo through innovative designs that benefit your productivity and bottom line. KUDU's research and development

starts at the field level by qualified industry specialists who understand the needs of each operation. KUDU builds partnerships with clients and suppliers to

ensure our products and services solve the unique challenges that face artificial lift applications. Check out KUDU's newest additions and product updates below.

KUDU TOUGH COAT™

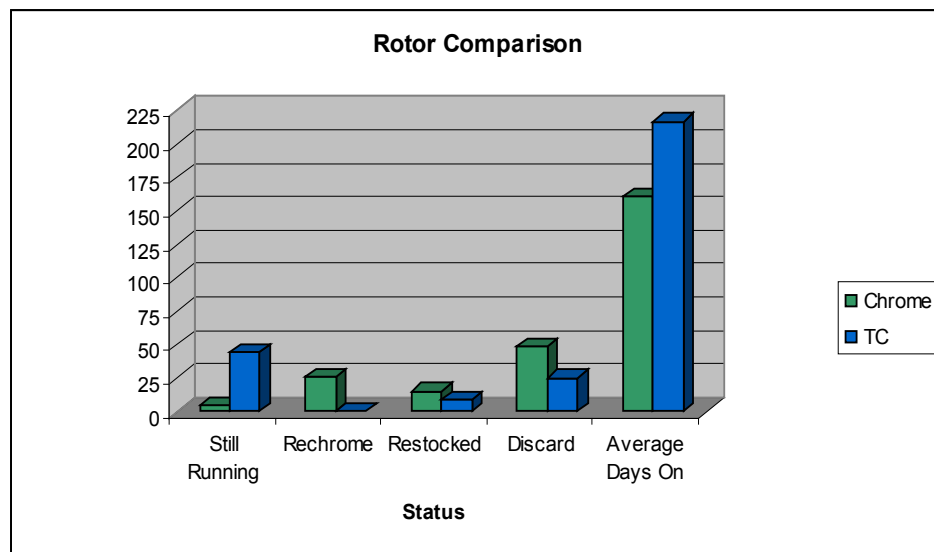
Redefining Your PCP

KUDU Tough Coat™ is a revolutionary spray metal coating applied to PCP rotors using advanced proprietary technology. Tough Coat rotors provide significantly improved resistance to corrosion and abrasion compared to the industry practice of electroplating chrome. The

result is longer rotor life with less degradation of efficiency over time. The benefits are lower operating expenses and higher production.

Awareness and usage of KUDU's Tough Coat has been steadily increasing since

Tough Coat's introduction. Recently, a study compared the runlife of Tough Coat rotors and chrome rotors. Run times, taken from a random sample of wells in the Lloydminster area, represent the performance of 78 Tough Coat rotors and 94 chrome rotors.



Summary of the results:

- 56% of Tough Coat rotors were still in operation compared with only 4.3% of chrome rotors.
- The average life for Tough Coat rotors, including rotors taken out of service and rotors still in service was 7.2 months (217 days) compared to 5.4 months (161 days) for chrome.
- The average run life for rotors still in service was 8.2 months (246 days) for Tough Coat compared to 4.7 months (141 days) for chrome.



Above and Beyond.

KUDU's exceptional technical team of industry specialists provides a perfect fit for any environment and are available 24/7 for service and support. Our proximity to oilfield activity enables us to have the knowledge, adaptability and responsiveness tailored to your operation's specific needs.

The services offered by KUDU set us apart from our competitors and are unique to each location. Our support is specifically designed to ensure that our customers get the most from their wells.

Examples of KUDU's exceptional service & support include:

CANADA

Product Service & Maintenance

- Drivehead and Power Unit oil changes and maintenance
- Rebuild Drivehead engines
- Downhole tool servicing
- Hydraulic system repair
- Motor change outs

Full System Design & Technical Support

- Property tracking
- Pump histories
- Well application design
- Equipment installation by a trained technician
- Technical support and troubleshooting
- Optimization and instrumentation
- Customized pump applications
- Test Well - Calgary, Alberta, Canada

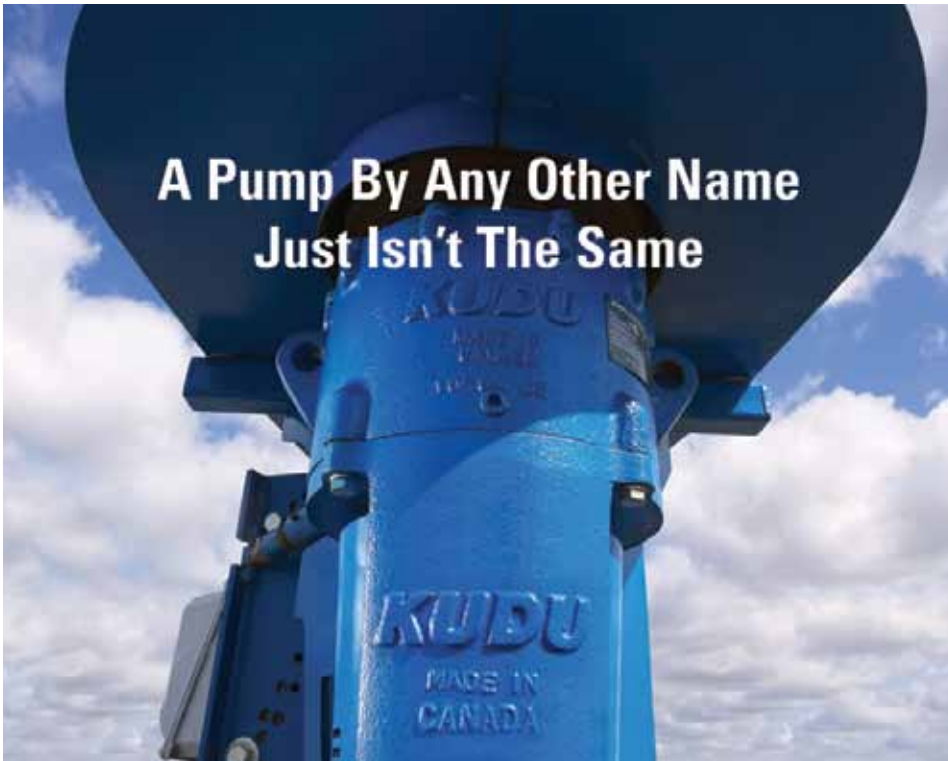
AUSTRALIA

- PCP system design (using CFER)
- PCP applications training
- Optimization training
- System installation (primarily surface equipment)
- Preventative maintenance programs (Driveheads and hydro-pacs)
- Hydraulic fluid filtration (extends life of hydraulic fluid and reduces operating costs)
- SAM PCP Well Manager install, commission and training
- Pump testing and evaluation
- Failure analysis of KUDU pumps as well as competitors pumps
- Drivehead and Hydropac maintenance of non-KUDU equipment

OMAN

- Application design
- Monitoring and optimization
- Installation and commissioning
- Troubleshooting and maintenance
- Inventory of PCP equipment
- Inventory of maintenance parts
- Inventory of SAM pump-off controllers and VFC
- Inventory of rods and pony rods

**A Pump By Any Other Name
Just Isn't The Same**



ZONE: Juandahs - Coal Seam Gas **MODEL:** 600TP450
FIELD: Kogan North **ELASTOMER:** 194

Expect reliability. Experience excellence.
KUDU's Pump of the Month ran for 1076 days or 25,824 hours. This pump produced 59,454m³ of water while the well delivered 2,721,930m³ of gas. KUDU gets the most from your well with the very best in quality, performance and service.

The KUDU PCP System Advantage: Progressing Cavity Pumps, Driveheads, Power Units, Well Optimization and more. Supported and serviced by industry specialists.

For more information contact Dan Wowchuk, KUDU Australia, at 617 3842 3105 or via email at Dan_Wowchuk@kudupump.com.

**Pump
of the
Month**TM
kudupump.com



Bringing solutions to surface since 1989.

2010 TRADE SHOWS

**Oil & Gas West Asia (OGWA)
Exhibition and Conference**
Muscat, Oman
April 11-13, 2010

Slugging it Out
Calgary, Alberta
April 19, 2010

Global Petroleum Show (GPS)
Calgary, Alberta
June 8 -10, 2010

Neftegaz 2010
Moscow, Russia
June 21-25, 2010

Lloydminster Heavy Oil Show
Lloydminster, Saskatchewan
September 15-16, 2010

**Kazakhstan International
Oil & Gas Exhibition (KIOGE)**
Almaty, Kazakhstan
October 5-8, 2010

Canada

Bonnyville 1-780-826-7179	Elk Point 1-780-724-2910	Kindersley 1-306-463-6440	Macklin 1-306-753-2950	Sedgewick 1-780-384-2177	Swift Current 1-306-741-2416	Wabasca 1-780-891-1032
Brooks 1-403-793-8080	Estevan 1-306-634-9966	Lloydminster 1-780-871-0660	Peace River 1-780-624-9570	Slave Lake 1-780-849-5650	Taber 1-403-223-1201	International 1-800-642-5519

Australia

Tel: +07 3842 3105
Email: australia@kudupump.com

Middle East

Tel: +968 9550 1017
Email: middleeast@kudupump.com

South Central America & Mexico

Tel: +1 281 296 1602
Email: southamerica@kudupump.com

KUDU INDUSTRIES INC.

HEAD OFFICE & MANUFACTURING
9112 – 40th Street SE
Calgary, AB Canada
T2C 2P3
Tel: +1 403 279 5838

Kazakhstan

Tel: +7 727 259 7630
Email: kazakhstan@kudupump.com

Russia

Tel: +7 342 249 8594
Email: russia@kudupump.com

North America

Toll Free: +1 800 642 5519



All information is considered accurate and up to date at time of printing.
KUDU reserves the right to amend the contents of this document at any time.
KUDU does not warranty manufacturers claims.

www.kudupump.com